

cecotec

MAKALU PRO

Ciclomotor/Moped



bongo

Manual de instrucciones
Instruction manual
Manuel d'instructions
Bedienungsanleitung
Manuale di istruzioni
Manual de instruções
Instructiehandleiding
Instrukcja obsługi
Návod k použití

8. RECICLAJE DE APARATOS ELÉCTRICOS Y ELECTRÓNICOS



Este símbolo indica que, de acuerdo con las normativas aplicables, el producto y/o la batería deberán desecharse de manera independiente de los residuos domésticos. Cuando este producto alcance el final de su vida útil, deberás extraer las pilas/baterías/acumuladores y llevarlo a un punto de recogida designado por las autoridades locales.



Para obtener información detallada acerca de la forma más adecuada de desechar sus aparatos eléctricos y electrónicos y/o las correspondientes baterías, el consumidor deberá contactar con las autoridades locales.

El cumplimiento de las pautas anteriores ayudará a proteger el medio ambiente.

9. GARANTÍA Y SAT

Cecotec responderá ante el usuario o consumidor final por las faltas de conformidad que existan en el momento de la entrega del producto en los términos, condiciones y plazos establecidos por la normativa aplicable.

Se recomienda que las reparaciones sean realizadas por personal cualificado.

Si detecta una incidencia con el producto o tiene alguna consulta, póngase en contacto con el Servicio de Asistencia Técnica oficial de Cecotec a través del número de teléfono +34 96 321 07 28.

10. COPYRIGHT

Los derechos de propiedad intelectual sobre los textos de este manual pertenecen a CECOTEC INNOVACIONES, S.L. Quedan reservados todos los derechos. El contenido de esta publicación no podrá, ni en parte ni en su totalidad, reproducirse, almacenarse en un sistema de recuperación, transmitirse o distribuirse por ningún medio (electrónico, mecánico, fotocopia, grabación o similar) sin la previa autorización de CECOTEC INNOVACIONES, S.L.

1. PARTS AND COMPONENTS

Fig. 1

1. Key switch
2. Handlebar height adjustment knob
3. Throttle
4. Rear-brake lever
5. Front-brake lever
6. Handlebar fixing lever
7. Deck
8. Front damper
9. Rear damper
10. Saddle
11. Front brake calliper
12. Brake calliper
13. Handlebar stem
14. Saddle height adjustment lever
15. Handlebar
16. Headlight (approved for road traffic)
17. Taillight (approved for road traffic)
18. Horn (approved for road traffic)
19. Speedometer (approved for road traffic)

Fig. 2

- 1 Throttle
- 2 Front-brake lever
- 3 Rear-brake lever

Note:

The graphics in this manual are schematic representations and may not exactly match the device.

2. BEFORE USE

- This moped comes in a packaging designed to protect it during transport. Take the moped out of the box and remove all packaging materials. You can keep the original box and other packaging elements in a safe place. This will help you prevent damage to the device when transporting it in the future. In case the original packaging is disposed of, make sure all packaging materials are recycled accordingly.
- Make sure all parts and components are included and in good conditions. If there is any

piece missing or not in good condition, immediately contact the official Cecotec Technical Support Service.

Box content:

- Makalu Pro
- Tool kit
- Instruction manual
- 20 A fuse
- Saddle and saddle post
- Headlight (approved version)
- Taillight (approved version)
- Horn (approved version)
- Speedometer (approved version)
- Carry bag (optional)
- Instruction manual

3. ASSEMBLY

Unfolding the handlebar. Fig. 3

- 1 The vehicle is delivered folded and with the handlebars removed.
- 2 First, unscrew washer 1 and remove screw 2.
- 3 Position the handlebar and insert screw 2 with locknut 1.
- 4 To place the handlebar stem properly in position, raise the handlebar and press closing spring 3.
- 5 Insert the locking lever into the corresponding slot and turn until properly locked.

NOTE: to fold the handlebar again, follow the reverse the procedure.

Assembling the handlebar grips. Fig. 4-5

With the handlebar upright, the grips will remain suspended as shown in Figure 4.

- 1 Take the left grip and pull it upwards until pushed into position.
- 2 Repeat the above step with the right grip.

Adjusting the handlebar height. Fig. 6

- 1 Turn the adjustment knob counterclockwise and adjust the handlebar to the desired height.
- 2 Once set to the desired height, turn the adjustment knob clockwise to lock it in place. Make sure the handlebar is firmly fixed.

Battery and motor

Both the battery and the motor come already installed and connected. To access any of these parts, lift the deck. To activate the electrical circuit, install the fuse provided.

Installing the saddle. Fig. 7

- 1 Insert the saddle into the saddle post fitting it snugly into the groove.
- 2 Screw the saddle in position on each side until completely fixed.

Adjusting the height of the saddle

To adjust the saddle height, unlock lever 1 and lower or raise the saddle to the desired position. Once the saddle is set to the desired height, lock lever 1 again.

Adjusting the front and rear brakes. Fig. 8

- Both brakes require periodic adjustment.
- The brakes should be about 5-6 mm away from the handlebar grip.
- Stand on the vehicle to check the distance between the handlebar grip and the brake. If the brakes exceed the recommended distance, turn the brake washer (A) to adjust it.
- To adjust the brake cable tension, adjust the screw (B) on the rear wheel. This will allow the wheel to turn easily when the brake is not being used and will also immediately bring the vehicle to a stop when the brake lever is pressed.

WARNING: after each adjustment, tighten the locknut.

Vehicle approval

To register this vehicle for use in public spaces, you must:

- Consult the legal regulations in force in your region.
- Carry out the assembly described below.
- Contact movilidadelectronica@cecotec.es and provide the following information:
 - Full name of the vehicle owner.
 - ID of the vehicle owner.
 - Chassis number located on the plate riveted to the chassis on the right side of the latter and laser engraved on the left side.
 - Purchase invoice.

When driving your vehicle in public areas, we recommend you consult the legal regulations in force in your region and carry the following documents:

- ID
- Warranty
- Technical data sheet
- Road tax
- Registration certificate

Assembling the approval kit.

Parts and components. Fig. 9

- 1 Saddle post
- 2 Saddle

- 3 Headlight bracket
- 4 Speedometer bracket
- 5 Speedometer
- 6 Rear fender
- 7 Number-plate holder swingarm
- 8 Tool kit
- 9 Rearview mirrors
- 10 Number-plate holder with built-in light

3.1. Mounting the headlight

- Headlights come installed by default as shown in Figure 10.
- To install the headlights in the correct position, first loosen the screws marked 6 and remove them. Then use 4 M6 * 16 hex screws and 4 flange lock nuts to fix the headlight bracket, and mount the headlights on the bracket as shown in Figure 10. B

Warning: some of the headlight parts have no use and must be removed. Please remove the parts shown in Figure 11.

3.2. Mounting the swingarm for the number-plate holder with built-in light Fig. 12

- To fit the number-plate holder swingarm, add a hub and replace both screws.
- Replace the screws marked 7 and 8 with 2 M6*30 hex screws.
- Then connect the light cable from the number-plate holder to the cable of the moped post.

3.3. Mounting the rearview mirrors. Fig. 13

To install the rearview mirrors, simply insert them in the handlebar holes and screw them securely in place. Once fixed, cover the lower part with the trim piece.

3.4. Mounting the speedometer. Fig. 14-15

To install the speedometer, first mount the speedometer bracket on the handlebars. To do this, screw 2 M6*10 hex screws into the threaded holes at the rear of the handlebar as shown in Figure 14. Then use 2 M4*10 hex screws to fix the speedometer to the bracket.

4. OPERATION

Charging the battery. Fig. 16

WARNING: make sure the device is switched off.

- 1 Open the charging port cover (1) on the right side of the vehicle and insert the end of the adapter.
- 2 Connect the other end of the power cable to a plug socket. The indicator light will turn red during charging and will change to green once charge is complete.

NOTE:

- The device comes pre-charged. However, it is recommended to charge it for 6 to 8 hours before first use.
- It is also recommended to charge it after every use and before storage.
- Do not allow the vehicle to fully run out of battery to prevent damage to the latter.

Start-up. Fig. 17

Insert the key and turn it clockwise to start the vehicle.

Throttle and brakes. Fig. 18

The throttle and front brake are located on the right handlebar grip.

1. Turn the throttle towards you to accelerate and release to decelerate.
2. Press the brake lever on the right side of the handlebar to brake with the front wheel.
3. The rear-brake lever is located on the left side of the handlebar. Press the left brake lever to brake with the rear wheel.

WARNING: do not turn the throttle abruptly. Turn it slowly to avoid accidents.

5. CLEANING AND MAINTENANCE

Cleaning

- Clean the vehicle with a soft cloth, water, and soap if necessary.
- After cleaning it, thoroughly dry any metal parts that may corrode or rust.
- Grease the suspension pivot points.

General maintenance

- Maintenance tasks must always be carried out by qualified personnel.
- Always use original Cecotec spare parts.
- Lower the kickstand and switch off the vehicle before carrying out any type of repair.

Tests to carry out

- After a fall, check that the throttle grip is working properly. To do this, try accelerating and decelerating several times.
- Regularly check that the brakes are in proper working condition. To do this, move the vehicle by pushing it manually and brake suddenly to make sure it responds.
- Check that all vehicle parts are in position and securely fastened.
- Check the screws.
- Check wheel wear and tension.
- Check the brakes and throttle cables for wear.

6. TROUBLESHOOTING

| Error | Possible cause | Possible solution |
|--|--|--|
| The motor does not start. | The battery is not connected. | Check the cables. |
| | Low battery. | Charge the battery. |
| | Electrical fault. | Check all cables: contact the official Cecotec Technical Support Service. |
| The rear wheel does not turn. | Motor fault. | Check the motor: contact the official Cecotec Technical Support Service. |
| The motor turns off during operation. | Tripped differential circuit. | Release the throttle and wait until the motor cools down. Contact the official Cecotec Technical Support Service. |
| The vehicle turns off after recharge. | The battery is not fully charged. | Charge the battery. |
| Battery fault. | The battery has reached the end of its useful life or is not functioning properly. | Replace the battery: contact the official Cecotec Technical Support Service. |
| | The battery is frozen. | Place the battery in a warm environment until it stabilises. |
| The vehicle stops suddenly during operation. | Fuse fault. | Replace the fuse: contact the official Cecotec Technical Support Service. |
| | The cable is damaged. | Check and repair or replace the cable: contact the official Cecotec Technical Support Service. |
| The battery does not charge. | Low battery. | Replace the battery: contact the official Cecotec Technical Support Service. |
| | The charger is broken. | Check and repair or replace the cable: contact the official Cecotec Technical Support Service. |

Note:

If none of these situations match your problem, do not attempt to disassemble or repair the device by yourself. Repairs carried out by unqualified persons may result in injury or serious malfunctions. Contact the official Cecotec Technical Support Service. The repair must be carried out by an authorised technician and you must use only original spare parts.

7. TECHNICAL SPECIFICATIONS


| | | |
|--------------------------|-----------------------------|----------------------|
| Product reference: | 07320 | |
| Product: | Makalu Pro electric moped | |
| Features | Measuring units | Specifications |
| Dimensions | Length x Width x Height (1) | 1350 x 630 x 1080 mm |
| Weight | Moped weight | 54 kg |
| User requirements | Age bracket (2) | AM license |
| Technical specifications | Range (3) | 45 Km |
| | Max. speed | 45 km/h |
| Motor | Max. power | 1600 W |
| | Rated power | 1000 W |
| | Par | 54 N*m |
| Battery | Charging time | 6 h |
| | Capacity: | 20 Ah |
| | Rated voltage | 48 V |
| | Max. charge voltage | 54.6 V |
| | Max. charging current | 2 A |
| Wheels | Wheel | 135/65-8 |

| | | |
|---------|------------|----------------------|
| Charger | Model | GJS150-5760200 |
| | Inlet | 100-240 V ~ 50/60 Hz |
| | Outlet | 57.6 V - 2 A |
| | Protection | IP20 |


- (1) Height from the floor to the upper part of the handlebar.
- (2) Check the current local regulations.
- (3) Measured with a weight of 80 kg, fully charged battery, flat surface, no inclination, no wind, and an ambient temperature of approximately 25 °C.
- The total value of the exposed vibration in the hand-arm system does not exceed 2.5 m/s².
 - The weighted acceleration to which the whole body is submitted does not exceed 0.5 m/s².
 - The A-weighted emission sound pressure level at work stations is less than or equal to 70 dB.

Technical specifications may change without prior notice to improve product quality.
Made in China | Designed in Spain

8. DISPOSAL OF OLD ELECTRICAL AND ELECTRONIC APPLIANCES



This symbol indicates that, according to the applicable regulations, the product and/or batteries must be disposed of separately from household waste. When this product reaches the end of its shelf life, you should dispose of the batteries/accumulators and take them to a collection point designated by the local authorities.



For detailed information on the most appropriate way to dispose of electrical and electronic equipment and/or batteries, consumers should contact their local authorities.

Compliance with the above guidelines will help protecting the environment.

9. TECHNICAL SUPPORT AND WARRANTY

Cecotec shall be liable to the end user or consumer for any lack of conformity that exists at the time of delivery of the product under the terms, conditions, and deadlines established by the applicable regulations.

It is recommended that repairs are carried out by qualified personnel.

If at any moment you detect any problem with your product or have any doubt, do not hesitate to contact the official Cecotec Technical Support Service at +34 963 210 728.

10. COPYRIGHT

The intellectual property rights over the texts in this manual belong to CECOTEC INNOVACIONES, S.L. All rights reserved. The contents of this publication may not, in whole or in part, be reproduced, stored in a retrieval system, transmitted, or distributed by any means (electronic, mechanical, photocopying, recording or similar) without the prior authorization of CECOTEC INNOVACIONES, S.L.

9. ZÁRUKA A TECHNICKÝ SERVIS

Společnost Cecotec odpovídá uživateli nebo konečnému spotřebiteli za jakýkoli nesoulad, který existuje v době dodání výrobku za podmínek a ve lhůtách stanovených platnými předpisy. Doporučuje se, aby opravy prováděl kvalifikovaný personál.

Pokud zjistíte problém s výrobkem nebo máte jakékoli dotazy, obraťte se na oficiální technickou podporu společnosti Cecotec na čísle +34 96 321 07 28.

10. COPYRIGHT

Práva duševního vlastnictví k textům v této příručce patří společnosti CECOTEC INNOVACIONES, S.L. Všechna práva jsou vyhrazena. Obsah této publikace nesmí být, zčásti nebo jako celek, reprodukován, ukládán do systému obnovy, přenášen nebo distribuován žádnými prostředky (elektronicky, mechanicky, foto kopírováním, nahráváním nebo podobným způsobem) bez předchozího souhlasu společnosti CECOTEC INNOVACIONES, S.L.

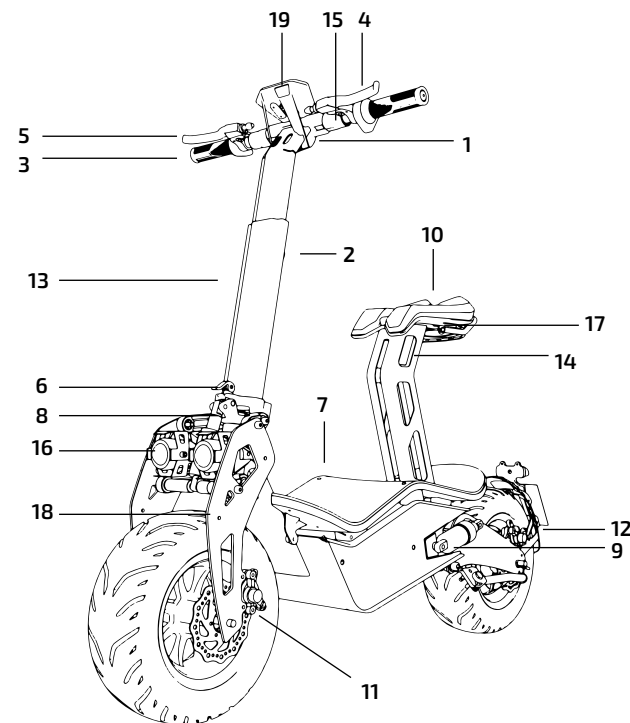


Fig./Img./Abb./Afb./ Rys./Obr. 1

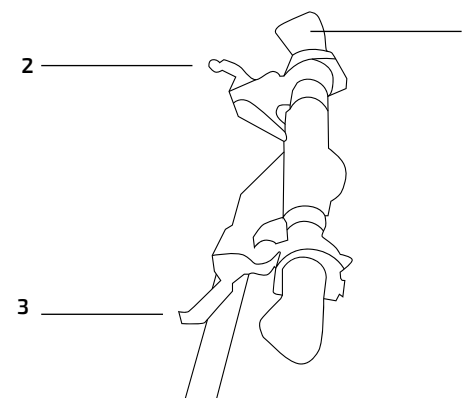


Fig./Img./Abb./Afb./ Rys./Obr. 2

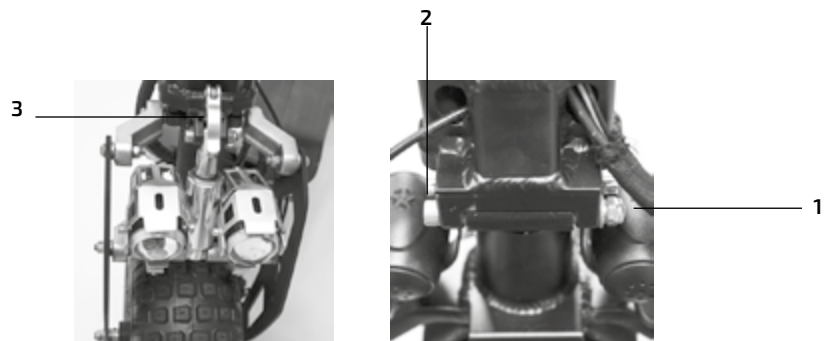


Fig./Img./Abb./Afb./ Rys./Obr. 3



Fig./Img./Abb./Afb./ Rys./Obr. 6

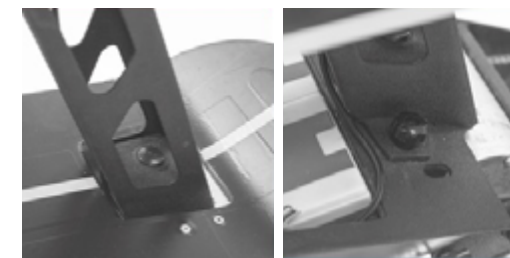


Fig./Img./Abb./Afb./ Rys./Obr. 7



Fig./Img./Abb./Afb./ Rys./Obr. 4

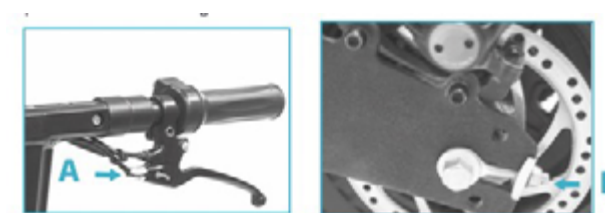


Fig./Img./Abb./Afb./ Rys./Obr. 8



Fig./Img./Abb./Afb./ Rys./Obr. 5

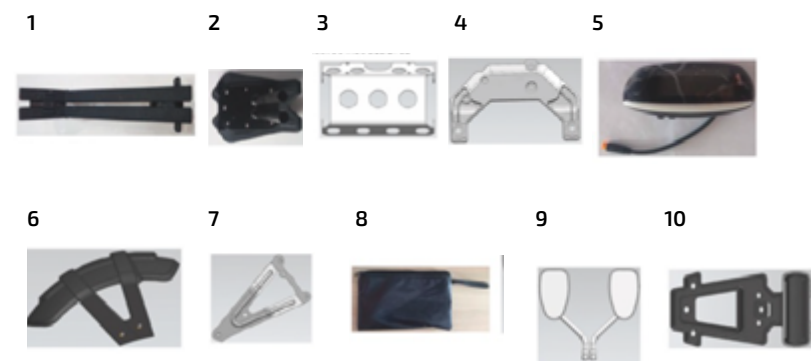


Fig./Img./Abb./Afb./ Rys./Obr. 9

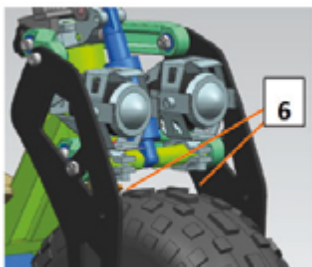


Fig./Img./Abb./Afb./ Rys./Obr. 10.A



Fig./Img./Abb./Afb./ Rys./Obr. 10.B

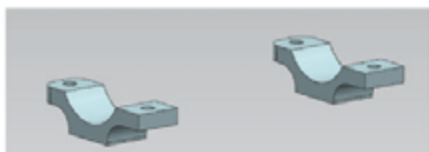


Fig./Img./Abb./Afb./ Rys./Obr. 11



Fig./Img./Abb./Afb./ Rys./Obr. 12

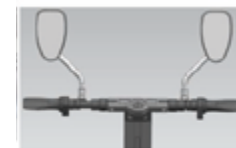


Fig./Img./Abb./Afb./ Rys./Obr. 13

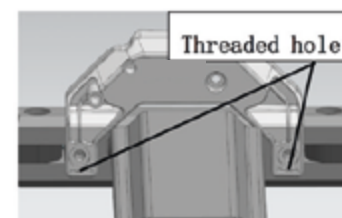


Fig./Img./Abb./Afb./ Rys./Obr. 14



Fig./Img./Abb./Afb./ Rys./Obr. 15



Fig./Img./Abb./Afb./ Rys./Obr. 16



Fig./Img./Abb./Afb./ Rys./Obr. 17



Fig./Img./Abb./Afb./ Rys./Obr. 18

www.cecotec.es

Cecotec Innovaciones S.L.
Av. Reyes Católicos, 60
46910, Alfafar , Valencia (Spain)
YV_02230306